

Division of Electrical and Computer Engineering

New Curricula for 2013-2014

Presentation to students October 24, 2012

Rationale Behind Changes

- Students wanted more flexibility in choosing junior level courses
- Students wanted a freshman introduction to ECE
- Students wanted a course teaching Matlab, PSpICE and printed circuit board CAD
- One or more of these things already exist in many strong ECE programs

What are the major changes common to both EE and EEC?

- Added EE 1810 - Intro to ECE
- Added EE 2810 – Computer Tools in ECE
- No longer require EE 3220 and 3221
- Combined EE 2720 and 2730 into a new 3 credit course: EE 2740
- Combined EE 3750 and 3751 into a new 3 credit course: EE 3752
- Only allow PHIL 2020 and drop 1 Humanity requirement

What are the major changes to EE?

- Dropped requirements of CSC 1254, EE 3220, 3221, 3410, 3530, 3752 (old 3750 and 3751)
- Added the Breadth Elective – 18 hours of courses selected by students from a list of 3000 level courses with EE rubric

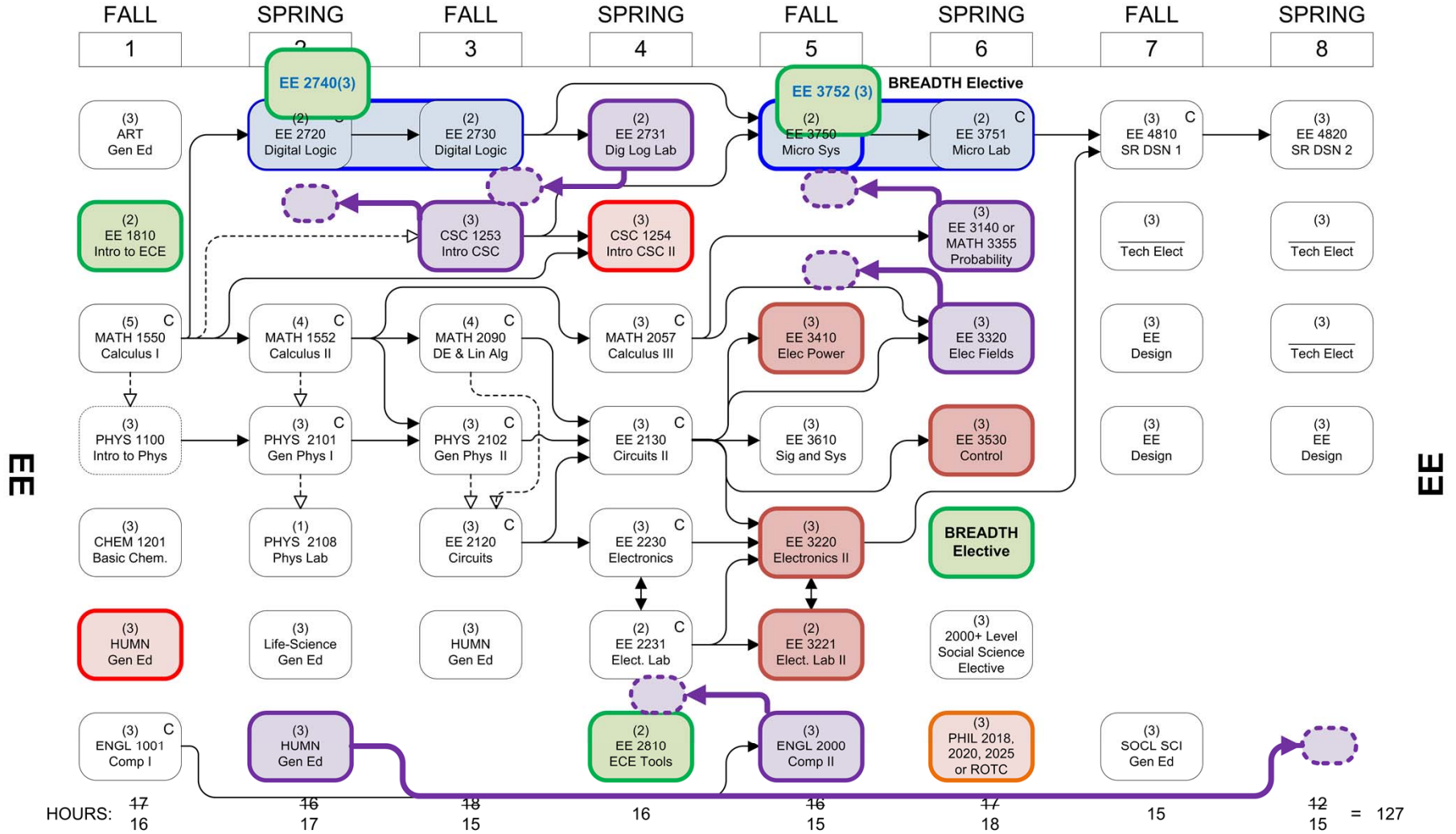
What are the major changes to EEC?

- Added EE 3710 – Communications in Computing (required, formerly EE 4710)
- Added EE 4755 – Hardware Description Language (required, new course)
- Dropped requirement of 4750
- Added a Breadth Elective – choose 1 course from a list of 3000 level courses with EE rubric

TOTAL HOURS = 127

ELECTRICAL ENGINEERING

2012-2013
2013-2014



FLOWCHART LEGEND



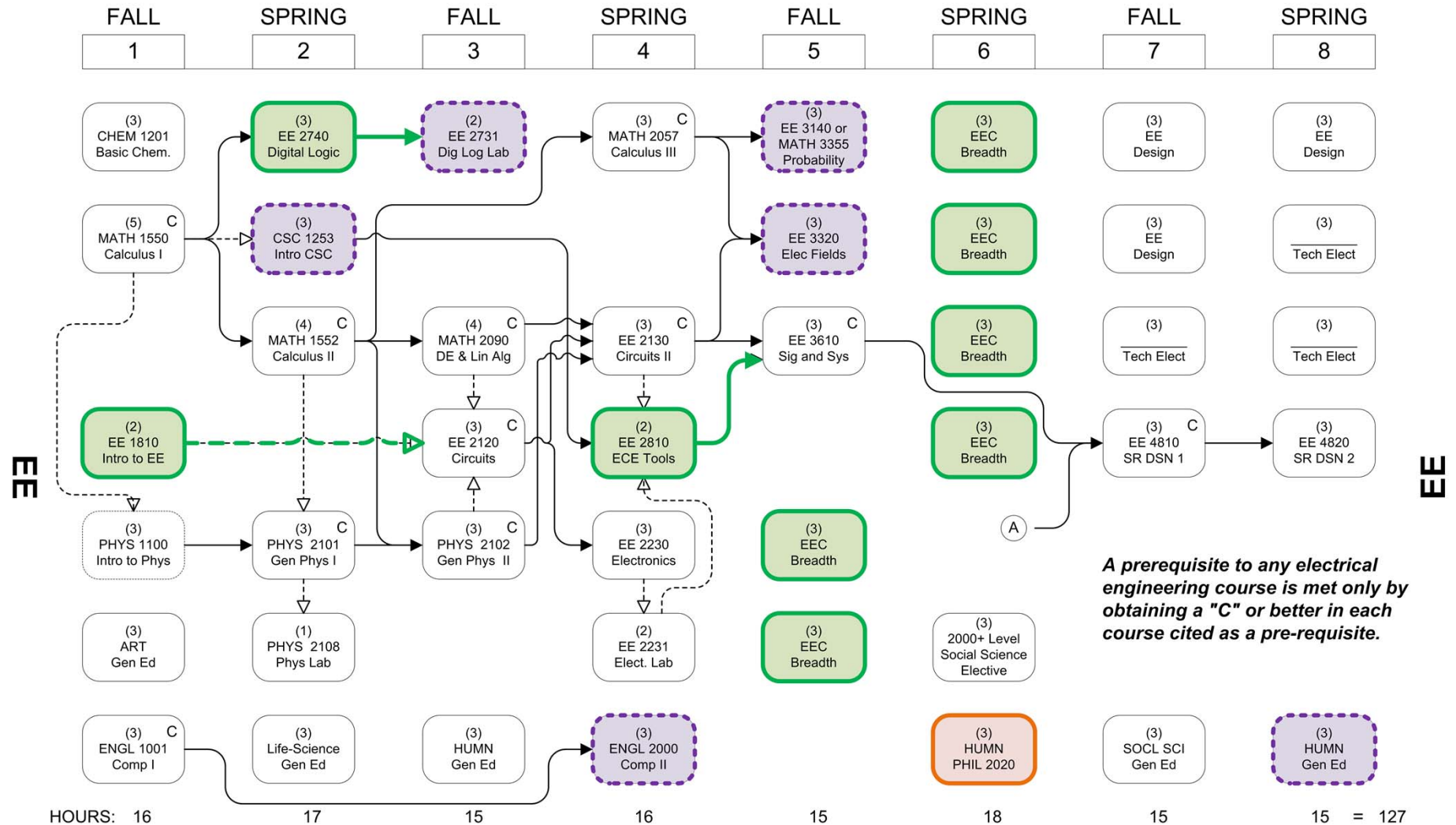
LOVE PURPLE LIVE GOLD

LSU

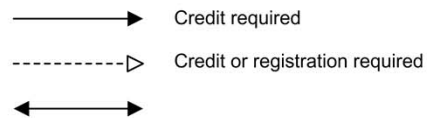
TOTAL HOURS = 127

ELECTRICAL ENGINEERING

2013-2014



FLOWCHART LEGEND



General Education –
See 2013-2014 General Catalog

New

Changed

EE Breadth: Students must choose at least 18 hours of Breadth Electives. At least 9 hours must be chosen from courses marked with *. Breadth Electives include: 3160*, 3220*, 3221(2), 3232, 3410*, 3530*, 3752*, 3755

A

In addition to EE 3610, the prerequisite is senior standing and one of 3160, 3220, 3410, 3530, or 3755

EE Breadth

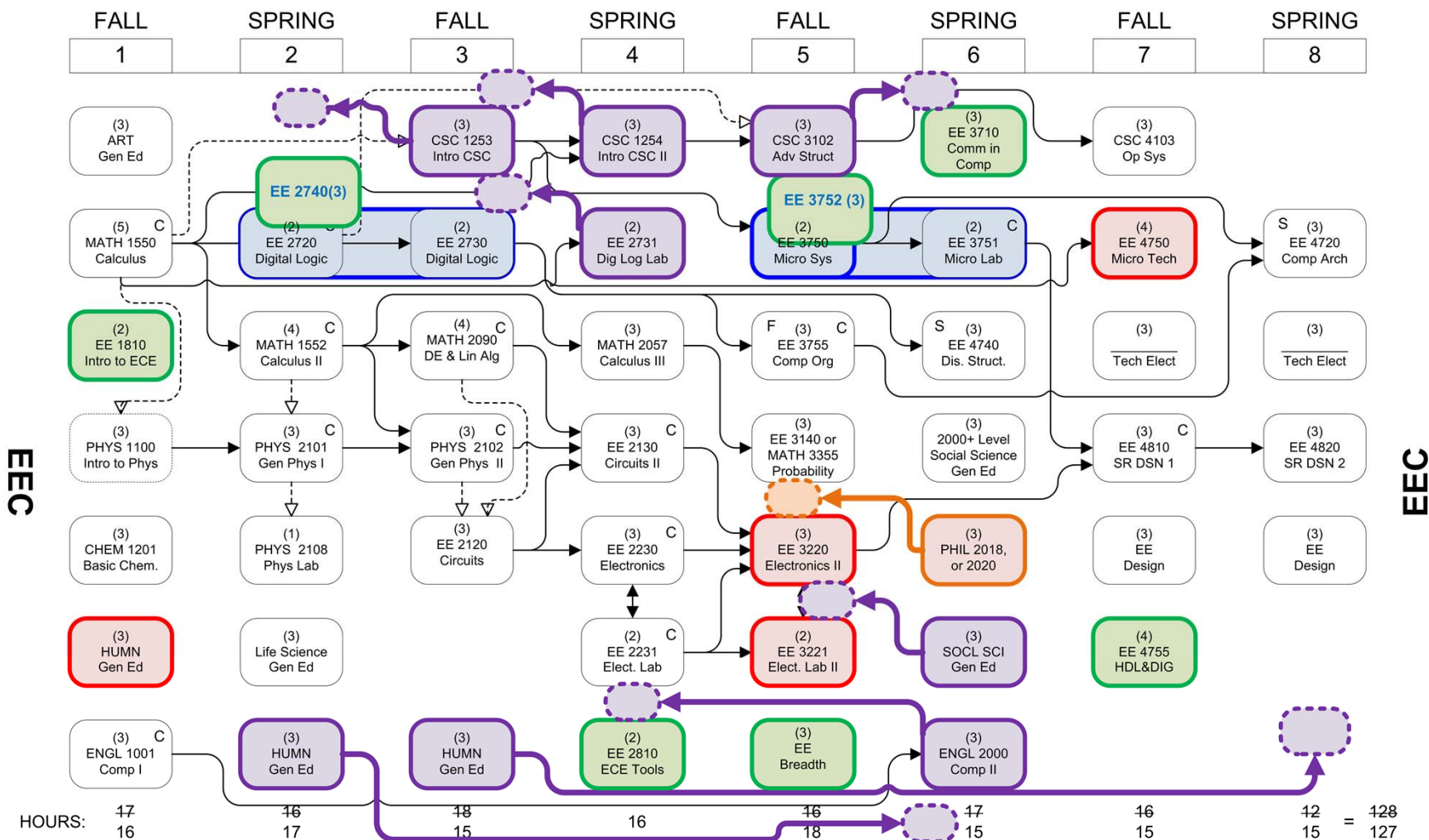
- Students must choose at least 18 hours from this list, and 9 hours must be chosen from courses marked with *.

EE 3160*, 3220*, 3221(2), 3232, 3410*, 3530*, 3752*, 3755

TOTAL HOURS = 128 127

COMPUTER ENGINEERING

2012-2013
2013-2014



FLOWCHART LEGEND



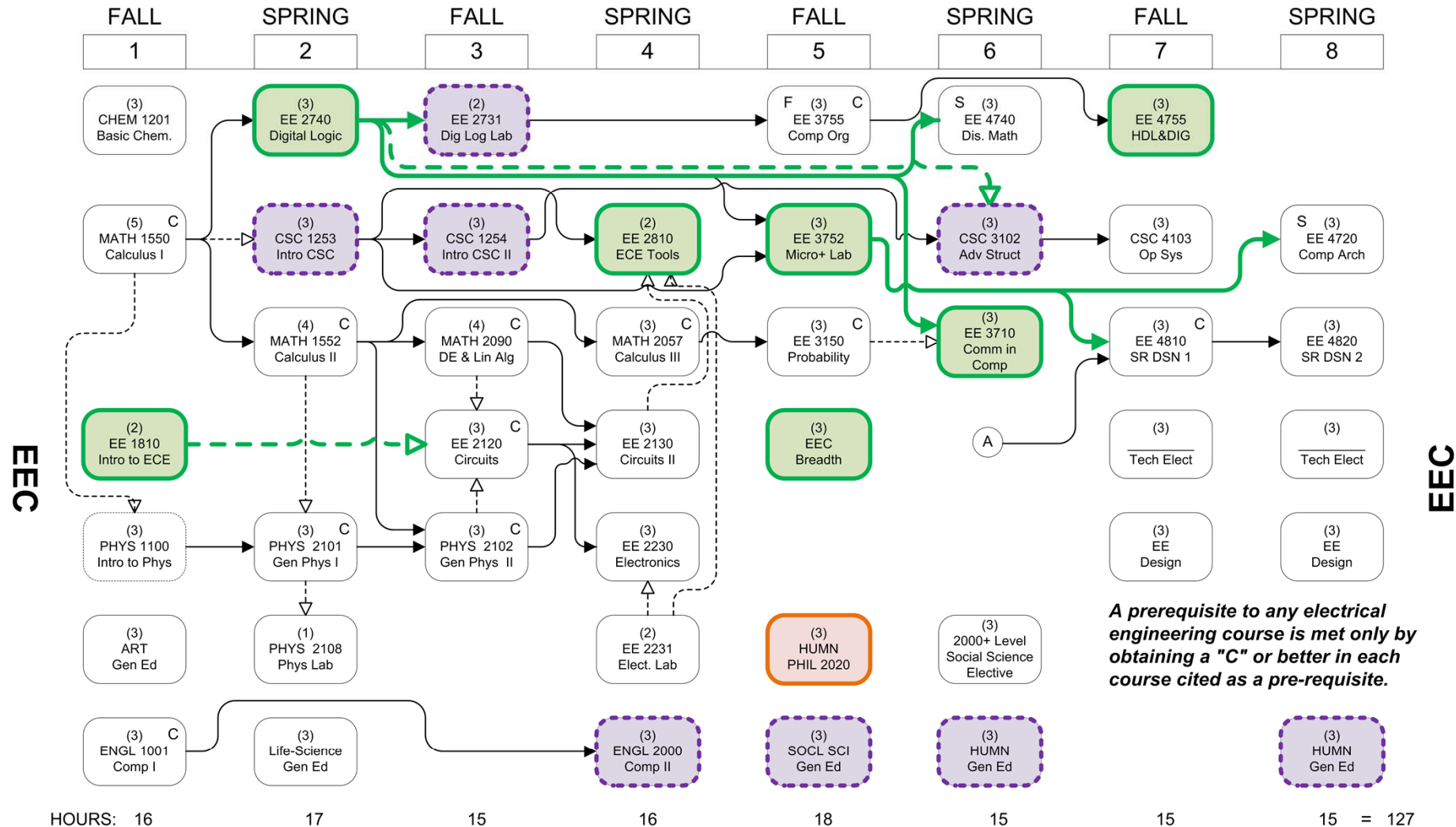
LOVE PURPLE LIVE GOLD

LSU

TOTAL HOURS = 127

COMPUTER ENGINEERING

2013-2014



EEC Breadth

- Students select 1 course from this list:
- 3160, 3220, 3320, 3410, 3530, 3610

What does this mean?

- Retention in ECE should improve after the freshman year.
- Students will be more prepared to take courses requiring the use of Matlab, PSpice and PCB design
- Students will have more flexibility when choosing their areas of interest in ECE.

Should you switch?

- Students can choose to move to a more recent catalog year from their current.
- Changing to the 2013-1014 flowchart would mean significant changes to requirements.
- Articulation tables will help with the switch - similar to transfer student articulation.
- Students should meet with the undergraduate advisor prior to making the switch.

Other important considerations

- If you have credit in 2 humanities and credit for either PHIL 2018,2025 or 3 ROTC credits, you WILL NOT need to take PHIL 2020. You can just take another humanity elective.
- GenEd electives:
 - In 2011 some humanities were moved to social sciences
 - First year of foreign language now counts as HUM

If you switch...

- EE 2810 will be required for EVERY student who switches to the new catalog year. **No substitutions for EE 2810 will be made.**
- EE 2810 may be offered in Spring 2013
- No current students will take EE 1810, other substitutions will be allowed.

If you switch...

- Were you planning to enroll in **EE 2720** in the spring 2013?
 - What if **EE 2740** was offered instead?
- Were you planning to enroll in EE 3750 in the spring 2013?
 - 3751 may be offered the last time in Fall 2013
- Any student enrolled in 3750 this semester should probably not switch to the new flowchart.

If you DON'T Switch...

- Eventually, classes from the old flowcharts will be dropped.
- New classes will replace these classes. If a student does not switch to the new flowchart, some may be forced to take new classes to meet old requirements.
- Hopefully all of you graduate before this happens – or switch

If you DON'T Switch...

- Here are some acceptable substitutions:
 - EE 3752 (3) = EE 3750 (2) + EE 3751 (1)
 - EE 2740 (3) = EE 2730 (2) + EE 2720 (1)
 - EE 2810 (2) = EE 3751(1) + EE 2720(1)
 - EE 3710 (3) = technical elective for EEC and EE
 - EE 4750 (3) = 3 credits of 4750, leaving them 1 credit short of the necessary 128. I would encourage a student in this case to switch to the new flowchart. EE 4750 can count for a design course.